

# EDEN ROAD RACE -

May 5, 2013 - Great Falls

USA Cycling Permit # 2013-\_\_\_\_\_

**\$499 Cash  
Prize List**

MBRA Series Event

## The Course

The route follows a scenic, lightly traveled road from Great Falls out to Eden and back. It has a tough mixture of short hills, long hills, and windy plateaus. Pavement is good and clean. Short uphill finishing sprint. The course will be open to vehicular traffic. Centerline rule will be enforced at all times, this includes the finish. Racers must follow traffic laws.

## Staging

Broadwater Bay Park in Gt Falls next to MacKenzie River Pizza. (see map). Please do not park in the boat trailer parking area or the MacKenzie lot. Restrooms- use City park restrooms on north end of staging area.

## Race Schedule/Distances

[See Map Below for Details](#)

Registration: 9:30 to 11:00am

Pre-race meeting: 11:15am

Men Category Pro, 1, 2 11:20am start - 61 long miles (2 laps) - *Start to A to C to A to Finish*

Men Category 3, Mstr A 11:30am start - 61 long miles (2 laps) - *Start to A to C to A to Finish*

Men Cat 4, 11:40am start - 46 miles (1.5 laps) - *Start to A to B to A to Finish*

Men Cat 5, Mstr B, 11:45 start - 46 miles (1.5 laps) - *Start to A to B to A to Finish*

Women Cat 1,2,3; 4 11:50 start 34 miles - *Start to A to Finish*

Juniors will immediately follow the women.

Male and Females will be scored separately. 22 miles - *Start to B to Finish*

ALL CATEGORIES add 5 miles for cool down return from finish to start area.

## Rules:

All USCF rules apply. Racers must wear helmets while racing or warming up/down. Fields may be combined/separated based on turnout. Racers must follow traffic laws. Junior gear restrictions will be enforced.

## Prizes:

Cash (total to be determined by turnout) will not exceed \$499. Awards will follow the racing at MacKenzie River Pizza.

## Fees:

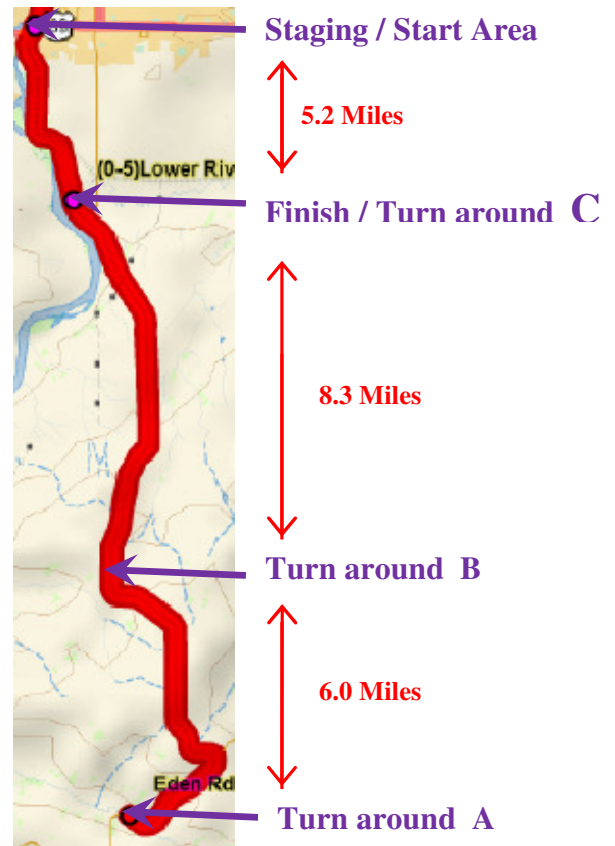
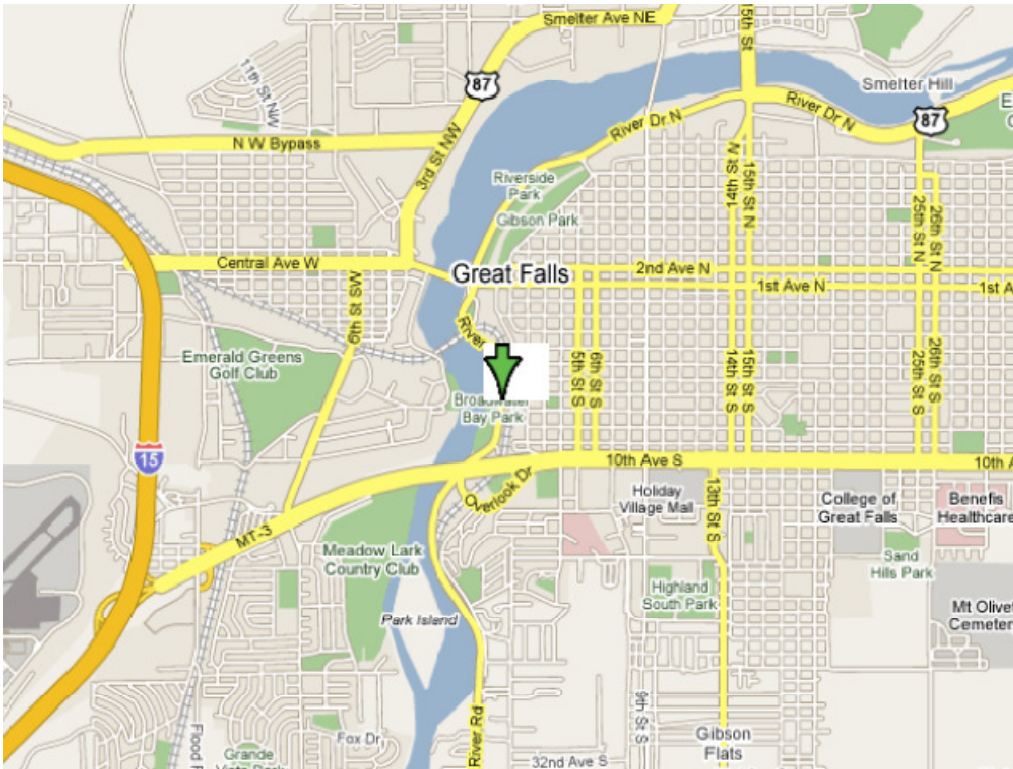
\$25 race entry fee. USA Cycling one-day licenses will be available for purchase on-site (\$10). Participants are encouraged to obtain annual licenses in advance of race day registration.

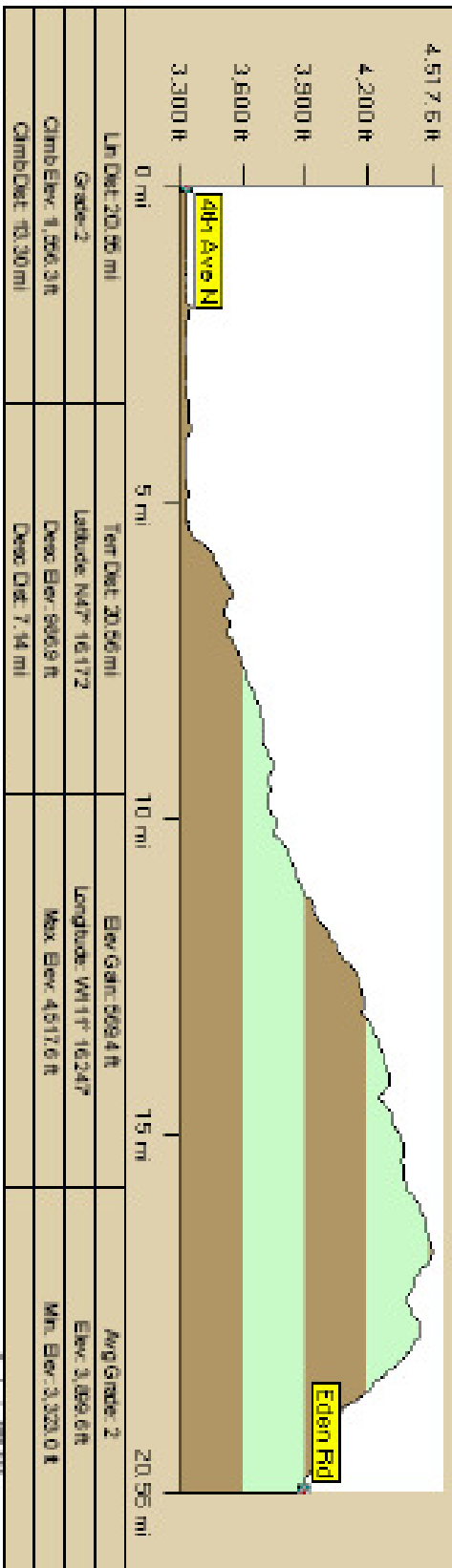
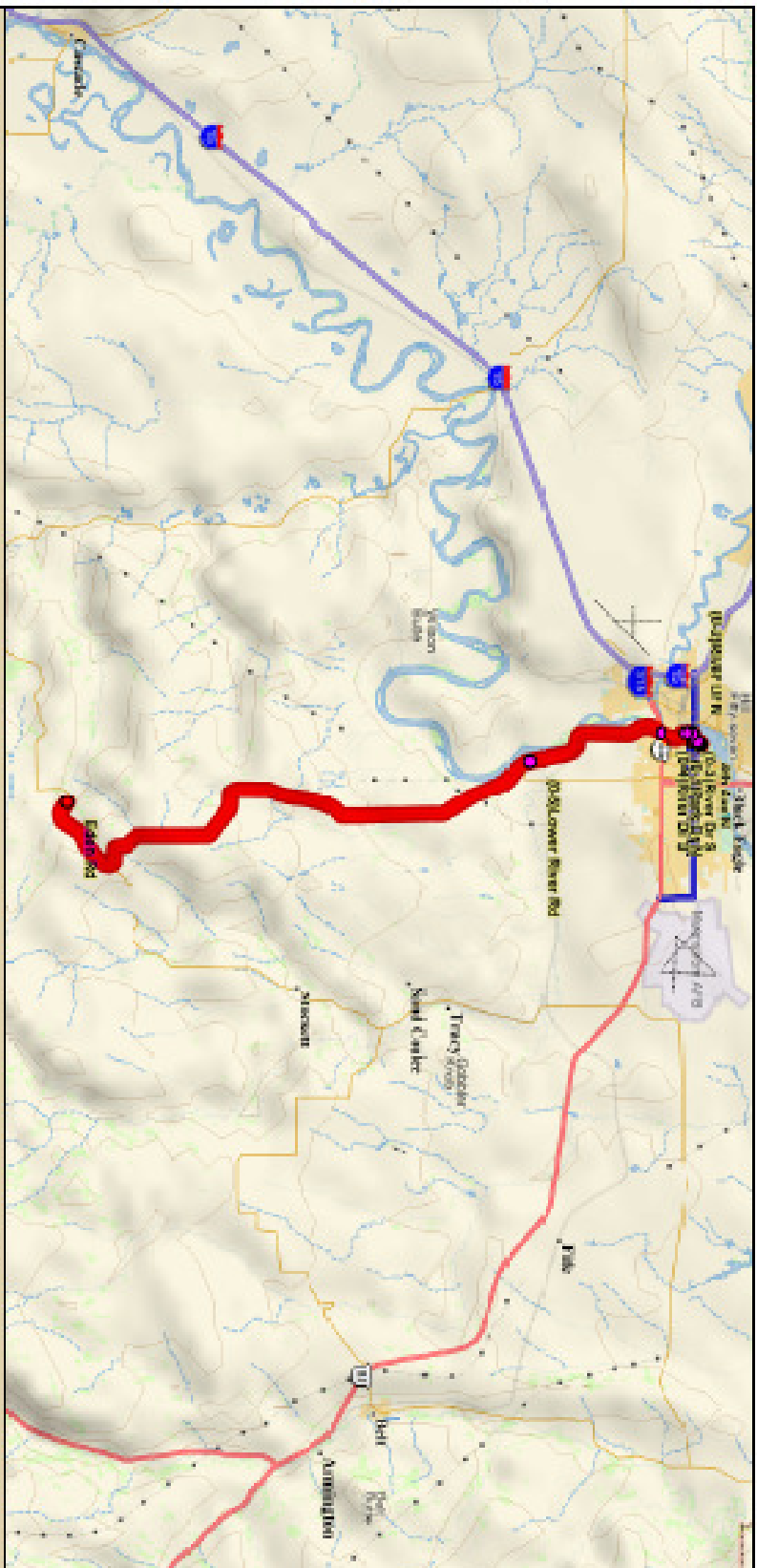
Registration Day of race or USAC. Juniors must have signed Release Form. On line registration closes 05/1/2012 10:00 PM

## Promoted By:

Great Falls Bicycle Club/Echelon

Contact: John Juras [johnjuras@gmail.com](mailto:johnjuras@gmail.com) 761-7021





Distance (mi)	Latitude (N41°)	Longitude (W117°)	Elev Gain (ft)	Avg Grade (%)
0	41.172	16.247	0	0
20.56	41.172	16.247	1,217.6	5.92

Data used subject to license.  
 © 2004 Delorme, Topo USA® SX  
 www.delorme.com

Scale: 1:275,000

1" = 4.24 mi Data Zoom: 8-9