

# 2009 Cow Country Classic

**SUNDAY May 31, 2009**

**HELD UNDER USA CYCLING PERMIT**

**RACE HELD RAIN OR SHINE**

**SPONSORED BY TEAM GREAT DIVIDE CYCLING**

**Wolf Creek Bridge Fishing Access 3 miles NE of Wolf Creek, MT**



**Schedule:** 8:30 am until 9:45 am - Registration  
10:00 - Mandatory Racers Meeting

Category	Start Time	Distance	1 <sup>st</sup>	2 <sup>nd</sup>	3 <sup>rd</sup>	4 <sup>th</sup>	5 <sup>th</sup>
<b>Men Cat 1/2</b>	10:15 am	87 miles	\$45	\$35	\$25	\$15	\$10
<b>Men Cat 3</b>	10:15 am	87 miles	\$35	\$15	\$10		
<b>Men Cat 4/5</b>	10:30 am	54 miles	\$35	\$15	\$10		
<b>Masters A</b>	10:40 am	54 miles	\$35	\$15	\$10		
<b>Masters B</b>	10:40 am	54 miles	\$35	\$15	\$10		
<b>Women Cat 1/2/3/4</b>	10:50 am	54 miles	\$45	\$35	\$25	\$15	\$10
<b>Juniors</b>	11:00 am	27 miles	Merch.	Merch.	Merch.	Merch.	Merch.

**Rules:** All USA Cycling Rules apply. Centerline rule will be enforced throughout the race, including at the finish. Neutral zone enforced in Wolf Creek and at the turnarounds. Racers shall obey all traffic laws.

Helmets are mandatory for all racers.

**Entry Fee:** \$30.00 includes one day MBRA membership. One day licenses will be available for \$10.00.

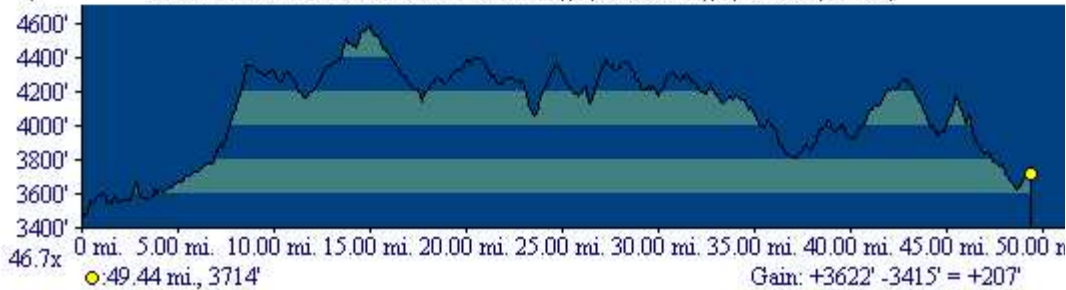
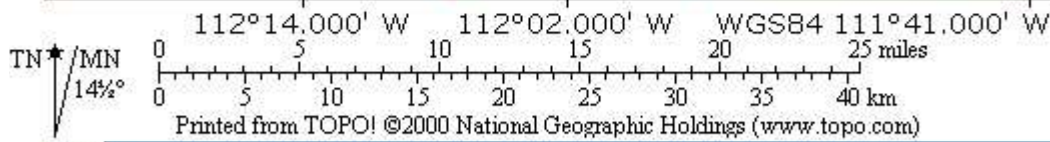
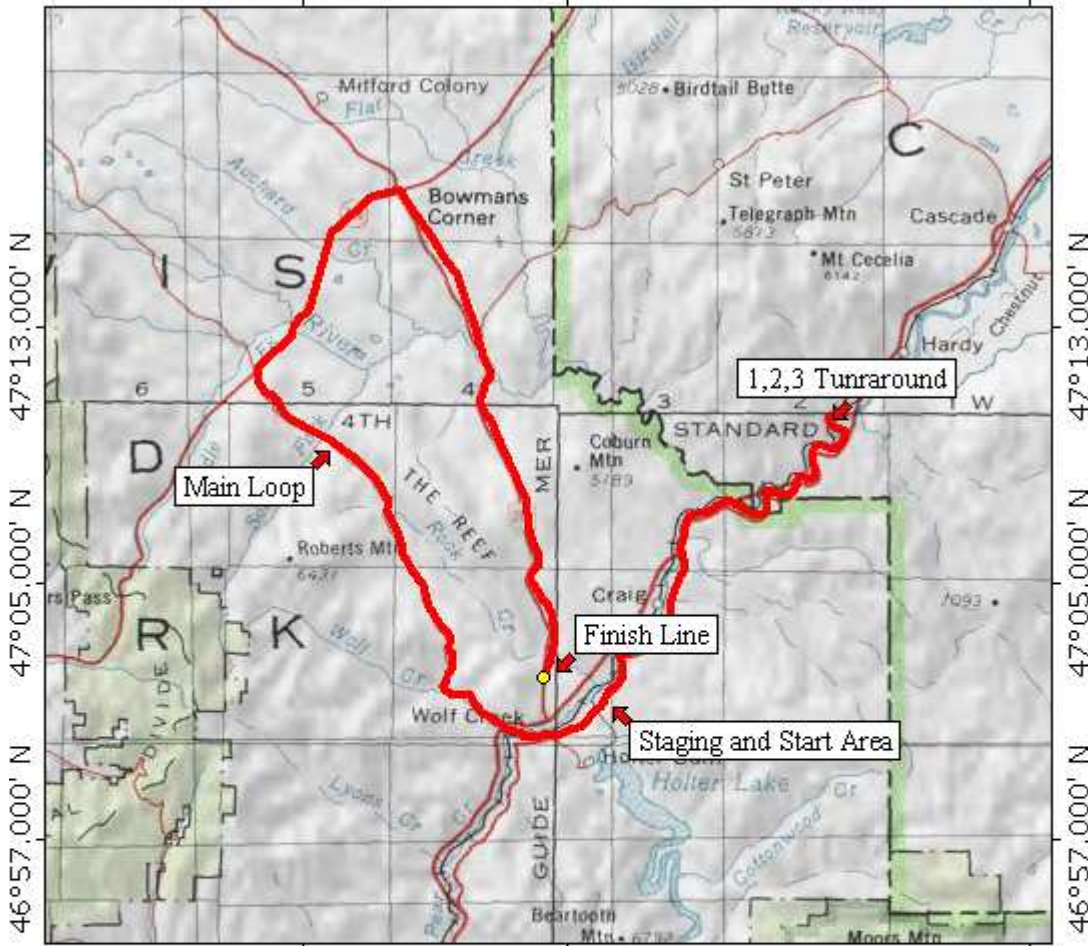
**Contact:** Joel Gerhart 406-490-2530, or [jgerhart@pioneer-technical.com](mailto:jgerhart@pioneer-technical.com)

### **Course Description:**

Cat Men 1/2/3: Racers proceed northeast on Recreation Road from the staging area to the turnaround (neutral zone) just across the one way bridge and then proceed back past the staging area west to Wolf Creek (neutral zone), then northwest on MT 434 to MT 200, turn right on MT 200 to US 287, then right on US 287 finish line at the top of the hill before I15. (See map below.) Total course length is approximately 87 miles.

All Other Categories (except juniors): Race on the same loop as the Cat Men 1/3/4 without the out-and-back section at the beginning. (See map below.) Total course length is approximately 54 miles.

***Promoter reserves right to combine categories***



**Sponsored By**

